

Recombinant Interleukin 32 (IL32)

Catalog No.: TP02598

50µg

Sequence Information

Species: Human

Gene ID:9235

Swiss Prot:P24001

Synonyms:NK4; TAIF; TAIFb; TAIFd; Natural Killer Cell Transcript 4; Natural killer cells protein 4; Tumor necrosis factor alpha-inducing factor

Residues:Met1~Lys131

MCFPKVLSDDMKKLKARVMMLLPTSAQGLGAWVSACDTEDTVGHLPWRDKDPA

LWCQLCLSSQHQAIERFYDKMQNAESGRGQVMSSSLAELEDDFKEGYLETVAAYY

EEQHPELTPLEKERDGLRCRGN

Product Information

Source: Prokaryotic expression.

Host: *E. coli*

Tags:N-terminal His and GST Tag

Subcellular Location: Secreted.

Purity: >90%

Traits: Freeze-dried powder

Buffer formulation:PBS, pH7.4, containing 0.1% SKL, 5% Trehalose.

Original Concentration: 150µg/mL

Applications: Positive Control; Immunogen; SDS-PAGE; WB.

(May be suitable for use in other assays to be determined by the end user.)

Predicted isoelectric point: 4.5

Predicted Molecular Mass: 44.9kDa

Accurate Molecular Mass: 50kDa as determined by SDS-PAGE reducing conditions.

[USAGE]

Reconstitute in ddH₂O to a concentration of 0.1-0.5 mg/mL. Do not vortex.

[STORAGE AND STABILITY]

Storage: Avoid repeated freeze/thaw cycles.

Store at 2-8°C for one month.

Aliquot and store at -80°C for 12 months.

Stability Test: The thermal stability is described by the loss rate. The loss rate was determined by accelerated thermal degradation test, that is, incubate the protein at 37°C for 48h, and no obvious degradation and precipitation were observed. The loss rate is less than 5% within the expiration date under appropriate storage condition.

[IDENTIFICATION]

```
GAATTCGGATCCGGGACCCAATTTGCTGTCCACCAATCATGCTAGCCATATGGCTGCCCGCGGCCACCCAGGCCGCTGCTGTGATGATGATGATGCTGCTGCCCATGGTATATCTCCTTCTTAAAGTTAAACA AAATATTCTTA GAGGGGAATTGTATCCG
```

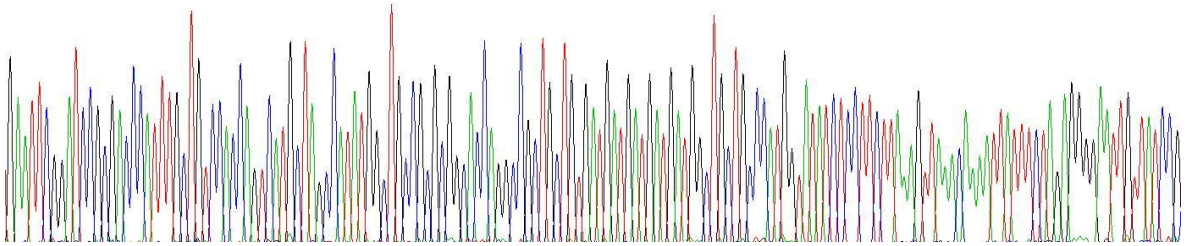


Figure 1. Gene Sequencing (Extract)

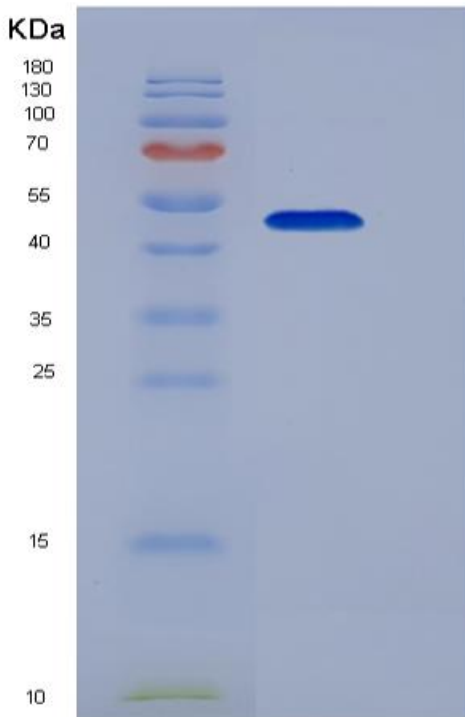


Figure 2. SDS-PAGE

[IMPORTANT NOTE]



The kit is designed for in vitro and research use only, we will not be responsible for any issue if the kit was used in clinical diagnostic or any other procedures.