

## Recombinant Platelet Derived Growth Factor Receptor Alpha (PDGFRa)

Catalog No.: TP03325 50µg

### Sequence Information

**Species:** Human

**Gene ID:**5156

**Swiss Prot:**P16234

**Synonyms:**CD140a; PDGFR2; Rhe-PDGFRa;  
CD140 antigen-like family member A;  
Platelet-derived growth factor receptor 2;  
Alpha-type platelet-derived growth  
factor receptor

**Residues:**Ala170~Glu387

ASYDSRQGFNGTFTVGPYICEATVKGKKFQTIPFNVYALKATSELDLEMEALKT  
VYKSGETIVVTCAVFNNEVDLQWYTPGEVKGKGITMLEEIKVPSIKLVYTLTV  
PEATVKDSGDYECARQATREVKEMKKVTISVHEKGFIEIKPTFSQLEAVNLHE  
VKHFVVEVRAYPPPRISWLKNNLTLIENLTEITDVEKIQEIRYRSKLLIRAK  
EE

### Product Information

**Source:** Prokaryotic expression.

**Host:** *E. coli*

**Tags:**N-terminal His Tag

**Subcellular Location:** Membrane.

**Purity:** >95%

**Traits:** Freeze-dried powder

**Buffer formulation:**PBS, pH7.4, containing 0.1% SKL, 5% Trehalose.

**Original Concentration:** 200µg/mL

**Applications:** Positive Control; Immunogen; SDS-PAGE; WB.

(May be suitable for use in other assays to be determined by the end user.)

**Predicted isoelectric point:** 7.8

**Predicted Molecular Mass:** 28.4kDa

**Accurate Molecular Mass:** 28kDa as determined by SDS-PAGE reducing conditions.

### **[ USAGE ]**

Reconstitute in ddH<sub>2</sub>O to a concentration of 0.1-0.5 mg/mL. Do not vortex.

### **[ STORAGE AND STABILITY ]**

**Storage:** Avoid repeated freeze/thaw cycles.

Store at 2-8°C for one month.

Aliquot and store at -80°C for 12 months.

**Stability Test:** The thermal stability is described by the loss rate. The loss rate was determined by accelerated thermal degradation test, that is, incubate the protein at 37°C for 48h, and no obvious degradation and precipitation were observed. The loss rate is less than 5% within the expiration date under appropriate storage condition.

## [ IDENTIFICATION ]

```
ISCTCTTACGCGCGACAGSSCTTTATGGGACTTCACCTGAGGACCTATATCTGTGGGACCCGCTCAAGGAGAGGATTCAGACATCCATTATATGTTTATGCTTTAAAGGACATCGAGACTGATCTAGAAATGGAGCTCTTAAAGCCGTGATAGTCTAGGGGAAAGCATGTGGTGCCTGTGCTGTTTAAACATGAGGAGGTGACCTTCAATG  
A S Y D S R Q G F H G T F T V G P Y I C E A T V K G K R F Q T I F F N V Y A L K A T S E I D L E M E A L K T V Y K S G E T I V V I C A V F N E V V D L Q W
```

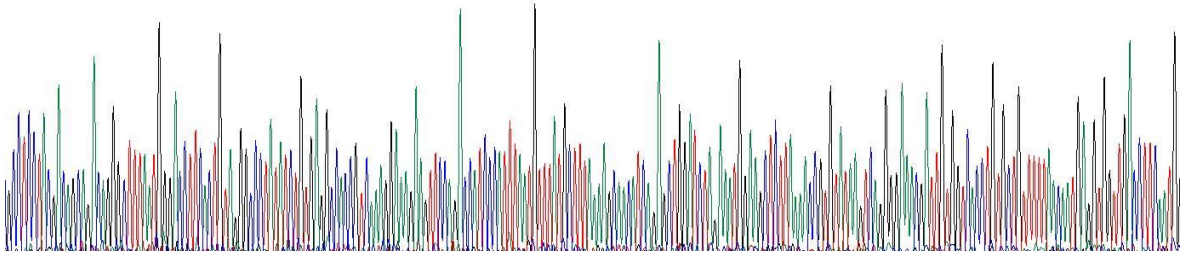


Figure 1. Gene Sequencing (Extract)

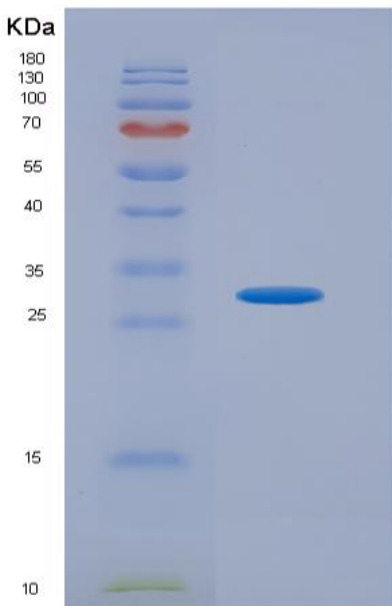


Figure 2. SDS-PAGE

## [ IMPORTANT NOTE ]

The kit is designed for in vitro and research use only, we will not be responsible for any



issue if the kit was used in clinical diagnostic or any other procedures.