

Monoclonal Antibody to Calcium/Calmodulin Dependent Protein Kinase II Alpha (CAMK2a)

RMA02757 100ul

[PROPERTIES]

Source: Monoclonal antibody preparation

Host: Rabbit

Purification: Protein A and Protein G affinity chromatography.

Traits: Liquid

Concentration: 1mg/ml

Clone Number:C1

Ig Isotype:IgG1 Kappa

UOM: 20µl

Cross Reactivity: Human, Mouse, Rat

Applications: WB, IHC, ICC/IF, FC.

[IMMUNOGEN]

Immunogen: Recombinant CAMK2a expressed in E.coli.

[APPLICATIONS]

Western blotting: 0.5-2µg/mL;

Immunohistochemistry: 5-20µg/mL;

Immunocytochemistry: 5-20µg/mL;

Optimal working dilutions must be determined by end user.

[FORMULATION]

Form & Buffer: Supplied as solution form in 0.01M PBS, pH7.4, containing 0.05% Proclin-300, 50% glycerol.

[STORAGE AND STABILITY]

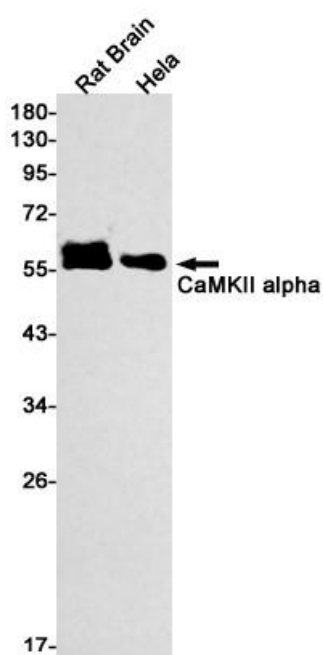
Storage: Avoid repeated freeze/thaw cycles.

Store at 4°C for frequent use.

Aliquot and store at -20°C for 12 months.

Stability Test: The thermal stability is described by the loss rate. The loss rate was determined by accelerated thermal degradation test, that is, incubate the protein at 37°C for 48h, and no obvious degradation and precipitation were observed. The loss rate is less than 5% within the expiration date under appropriate storage condition.

[IDENTIFICATION]



Western blot analysis of Anti-CaMKII alpha
antibody(RMA02757) Gel: 10% SDS-PAGE
Lysate: 20 µg Primary

antibody: RMA02757(CaMKII alpha antibody)at dilution 1:1000

Secondary antibody: Goat anti rabbit IgG (SPA10002)at 1:1000 dilution

[IMPORTANT NOTE]

The kit is designed for research use only, we will not be responsible for any issue if the kit was used in clinical diagnostic or any other procedures.
