



## Polyclonal Antibody to Collagen Type I Alpha 1 (COL1a1)

PA13054 100ul

### [ PROPERTIES ]

**Source:** Polyclonal antibody preparation

**Host:** Rabbit

**Purification:** Antigen-specific affinity chromatography followed by Protein A affinity chromatography.

**Traits:** Liquid

Concentration: 0.26mg/ml

Ig Isotype: IgG

**UOM:** 100µl

**Cross Reactivity:** Human, Mouse, Rat

**Applications:** WB, IHC, ICC/IF, FC, IP.

### [ IMMUNOGEN ]

Immunogen: Recombinant protein of human COL1a1 (Arg253~Ala471).

### [ APPLICATIONS ]

**Western blotting:** 0.5-2µg/mL;;

**Immunohistochemistry:** 5-20µg/mL;

**Immunocytochemistry:** 5-20µg/mL;

**Flow Cytometry:** 5-20µg/mL;

**Immunoprecipitation:** 5-20µg/mL;

Optimal working dilutions must be determined by end user.

### [ FORMULATION ]

**Form & Buffer:** Supplied as solution form in 0.01M PBS, pH7.4, containing 0.05% Proclin-300, 50% glycerol.

### [ STORAGE AND STABILITY ]

**Storage:** Avoid repeated freeze/thaw cycles.

Store at 4°C for frequent use.

Aliquot and store at -20°C for 12 months.

**Stability Test:** The thermal stability is described by the loss rate. The loss rate was determined by accelerated thermal degradation test, that is, incubate the protein at 37°C for 48h, and no obvious degradation and precipitation were observed. The loss rate is less than 5% within the expiration date under appropriate storage condition.

### [ IDENTIFICATION ]

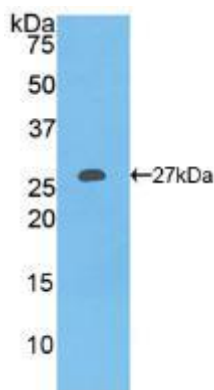


Figure. Western Blot; Sample:  
Recombinant COL1a1, Human.

### [ IMPORTANT NOTE ]

The kit is designed for research use only, we will not be responsible for any issue if the kit was used in clinical diagnostic or any other procedures.

---