



Monoclonal Antibody to Microtubule-associated proteins 1A/1B light chain 3A (LC3A)

RMA02314 100ul

[PROPERTIES]

Source: Monoclonal antibody preparation

Host: Rabbit

Purification: Protein A and Protein G affinity chromatography.

Traits: Liquid

Concentration: 0.5mg/ml

Ig Isotype: IgG

UOM: 100µl

Cross Reactivity: Human, Mouse, Rat

Applications: WB, IHC, ICC/IF, IP

[IMMUNOGEN]

Immunogen: Recombinant protein of mouse LC3A.

[APPLICATIONS]

Western blotting: 1:2000;

Immunohistochemistry: 1:20;

Immunocytochemistry: 1:20-1:100;

Flow Cytometry: 1:20-1:100;

Immunoprecipitation: 1:20;

Optimal working dilutions must be determined by end user.

[FORMULATION]

Form & Buffer: Supplied as solution form in 0.01M PBS, pH7.4, containing 0.05% Proclin-300, 50% glycerol.

[STORAGE AND STABILITY]

Storage: Avoid repeated freeze/thaw cycles.

Store at 4°C for frequent use.

Aliquot and store at -20°C for 12 months.

Stability Test: The thermal stability is described by the loss rate. The loss rate was determined by accelerated thermal degradation test, that is, incubate the protein at 37°C for 48h, and no obvious degradation and precipitation were observed. The loss rate is less than 5% within the expiration date under appropriate storage condition.

[IDENTIFICATION]

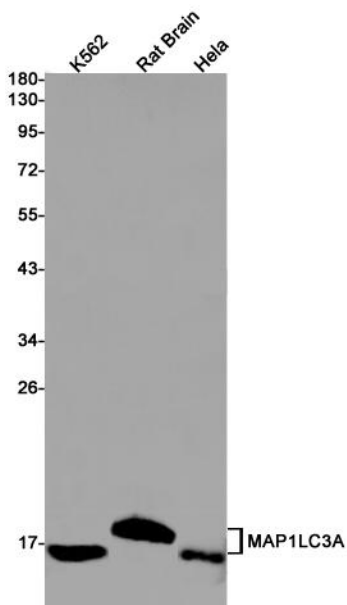


Figure. Western Blot; Sample:
Recombinant LC3A, Mouse.

[IMPORTANT NOTE]

The kit is designed for research use only, we will not be responsible for any issue if the kit was used in clinical diagnostic or any other procedures.
