



## Monoclonal Antibody to Cytokeratin 8 (CK8)

MA02749 100ul

### **[ PROPERTIES ]**

**Source:** Monoclonal antibody preparation

**Host:** Mouse

**Purification:** Protein A and Protein G affinity chromatography.

**Traits:** Liquid

**Concentration:** 0.5mg/ml

**Ig Isotype:** IgG

**UOM:** 200µl

**Cross Reactivity:** Human

**Applications:** WB, ICC, IHC-P, IHC-F, ELISA.

### **[ IMMUNOGEN ]**

**Immunogen:** Recombinant protein of human KRT8 (Lys92~Lys393).

### **[ APPLICATIONS ]**

**Western blotting:** 1:100-400

**Immunocytochemistry in formalin fixed cells:** 1:100-500

**Immunohistochemistry in formalin fixed frozen section:** 1:100-500

**Immunohistochemistry in paraffin section:** 1:50-200

**Enzyme-linked Immunosorbent Assay:** 1:100-200

Optimal working dilutions must be determined by end user.

### **[ FORMULATION ]**

**Form & Buffer:** Supplied as solution form in 0.01M PBS, pH7.4, containing 0.05% Proclin-300, 50% glycerol.

### **[ STORAGE AND STABILITY ]**



**Storage:** Avoid repeated freeze/thaw cycles.

Store at 4°C for frequent use.

Aliquot and store at -20°C for 12 months.

**Stability Test:** The thermal stability is described by the loss rate. The loss rate was determined by accelerated thermal degradation test, that is, incubate the protein at 37°C for 48h, and no obvious degradation and precipitation were observed. The loss rate is less than 5% within the expiration date under appropriate storage condition.

### [ IDENTIFICATION ]

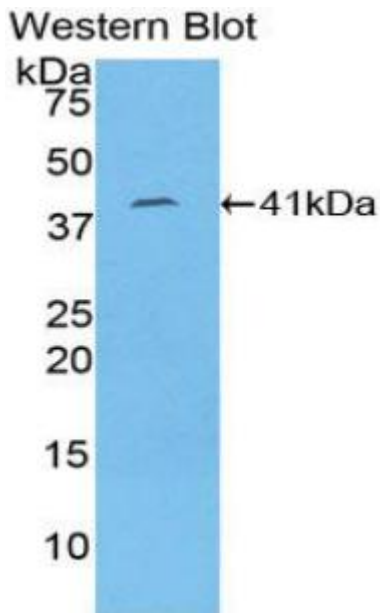


Figure. Western Blot; Sample:  
Recombinant KRT8, Human.

### [ IMPORTANT NOTE ]

The kit is designed for research use only, we will not be responsible for any issue if the kit was used in clinical diagnostic or any other procedures.

