



## Monoclonal Antibody to Nuclear Mitotic Apparatus Protein 1 (NUMA1)

MA02750 100ul

### **[ PROPERTIES ]**

**Source:** Monoclonal antibody preparation

**Host:** Mouse

**Purification:** Protein A and Protein G affinity chromatography.

**Traits:** Liquid

Concentration: 1mg/ml

Ig Isotype: IgG

**UOM:** 1ml

**Cross Reactivity:** Human, Porcine

**Applications:** WB; IHC; ICC; IP.

### **[ IMMUNOGEN ]**

Immunogen: Recombinant protein of human NUMA1 (Phe1700~His2115).

### **[ APPLICATIONS ]**

**Western blotting:** 0.01-2 $\mu$ g/mL

**Immunocytochemistry:** 5-20 $\mu$ g/mL

**Immunohistochemistry :** 5-20 $\mu$ g/mL

Optimal working dilutions must be determined by end user.

### **[ FORMULATION ]**

**Form & Buffer:** Supplied as solution form in 0.01M PBS, pH7.4, containing 0.05%

Proclin-300, 50% glycerol.

### **[ STORAGE AND STABILITY ]**

**Storage:** Avoid repeated freeze/thaw cycles.

Store at 4°C for frequent use.

Aliquot and store at -20°C for 12 months.

**Stability Test:** The thermal stability is described by the loss rate. The loss rate was determined by accelerated thermal degradation test, that is, incubate the protein at 37°C for 48h, and no obvious degradation and precipitation were observed. The loss rate is less than 5% within the expiration date under appropriate storage condition.

### **[ IDENTIFICATION ]**

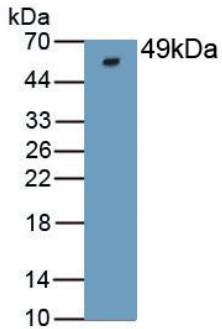


Figure. Western Blot; Sample:  
Recombinant NUMA1, Human.

### **[ IMPORTANT NOTE ]**

The kit is designed for research use only, we will not be responsible for any issue if the kit was used in clinical diagnostic or any other procedures.

---