



Polyclonal Antibody to Salivary Alpha Amylase (AMY1A)

PA13066 100ul

[PROPERTIES]

Source: Polyclonal antibody preparation

Host: Rabbit

Purification: Antigen-specific affinity chromatography followed by Protein A affinity chromatography.

Traits: Liquid

Concentration: 0.5mg/ml

Ig Isotype: IgG

UOM: 100µl

Cross Reactivity: Human, Mouse

Applications: WB, IHC.

[IMMUNOGEN]

Immunogen: Recombinant protein of human AMY1A.

[APPLICATIONS]

Western blotting: 1:1000;

Immunohistochemistry: 1:20;

Optimal working dilutions must be determined by end user.

[FORMULATION]

Form & Buffer: Supplied as solution form in 0.01M PBS, pH7.4, containing 0.05% Proclin-300, 50% glycerol.

[STORAGE AND STABILITY]

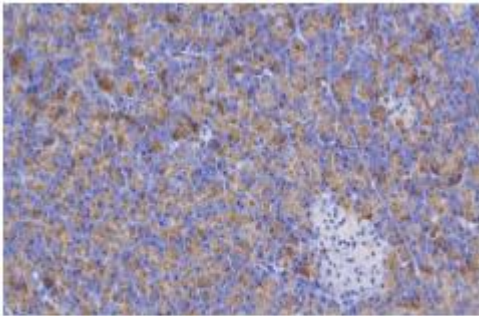
Storage: Avoid repeated freeze/thaw cycles.

Store at 4°C for frequent use.

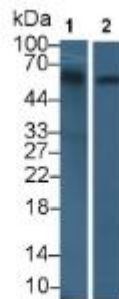
Aliquot and store at -20°C for 12 months.

Stability Test: The thermal stability is described by the loss rate. The loss rate was determined by accelerated thermal degradation test, that is, incubate the protein at 37°C for 48h, and no obvious degradation and precipitation were observed. The loss rate is less than 5% within the expiration date under appropriate storage condition.

[IDENTIFICATION]



DAB staining on IHC-P; Samples: Human Pancreas Tissue; Primary Ab: 10µg/ml Rabbit



Western Blot; Sample: Lane1: Rat Pancreas lysate; Lane2: Mouse Pancreas lysate

[IMPORTANT NOTE]

The kit is designed for research use only, we will not be responsible for any issue if the kit was used in clinical diagnostic or any other procedures.