



## Polyclonal Antibody to Cytokeratin 7 (CK7)

DPA04215 100ul

### **[ PROPERTIES ]**

**Source:** Polyclonal antibody preparation

**Host:** Rabbit

**Purification:** Antigen-specific affinity chromatography followed by Protein A affinity chromatography.

**Traits:** Liquid

Concentration: 0.5mg/ml

Ig Isotype: IgG

**UOM:** 100µl

**Cross Reactivity:** Human

**Applications:** WB, IHC, ICC/IF, FC, IP.

### **[ IMMUNOGEN ]**

Immunogen: A synthetic peptide of human Cytokeratin 7.

### **[ APPLICATIONS ]**

**WB:** 1:1000-1:5000

**IHC:** 1:20-1:100

**ICC/IF:** 1:20-1:50

**FC:** 1:20

**IP:** 1:20

Optimal working dilutions must be determined by end user.

### **[ FORMULATION ]**

**Form & Buffer:** Supplied as solution form in 0.01M PBS, pH7.4, containing 0.05% Proclin-300, 50% glycerol.



## **[ STORAGE AND STABILITY ]**

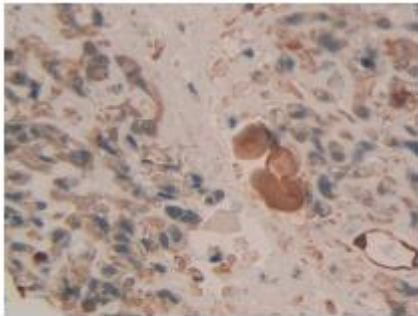
**Storage:** Avoid repeated freeze/thaw cycles.

Store at 4°C for frequent use.

Aliquot and store at -20°C for 12 months.

**Stability Test:** The thermal stability is described by the loss rate. The loss rate was determined by accelerated thermal degradation test, that is, incubate the protein at 37°C for 48h, and no obvious degradation and precipitation were observed. The loss rate is less than 5% within the expiration date under appropriate storage condition.

## **[ IDENTIFICATION ]**



DAB staining on IHC-P; Samples: Human  
Lung cancer Tissue; Primary Ab: 10µg/ml

## **[ IMPORTANT NOTE ]**

The kit is designed for research use only, we will not be responsible for any issue if the kit was used in clinical diagnostic or any other procedures.

---