



## Polyclonal Antibody to Estrogen Receptor Beta (ESR2)

PA09396 100ul

### **[ PROPERTIES ]**

**Source:** Monoclonal antibody preparation

**Host:** Rabbit

**Purification:** Protein A and Protein G affinity chromatography.

**Traits:** Liquid

Concentration: 0.5mg/ml

Ig Isotype: IgG

**UOM:** 100µl

**Cross Reactivity:** Human, Mouse

**Applications:** IHC, ICC/IF.

### **[ IMMUNOGEN ]**

Immunogen: Recombinant protein of human ESR2.

### **[ APPLICATIONS ]**

**IHC 1:100-1:300**

**ICC/IF: 1:100**

Optimal working dilutions must be determined by end user.

### **[ FORMULATION ]**

**Form & Buffer:** Supplied as solution form in 0.01M PBS, pH7.4, containing 0.05% Proclin-300, 50% glycerol.

### **[ STORAGE AND STABILITY ]**

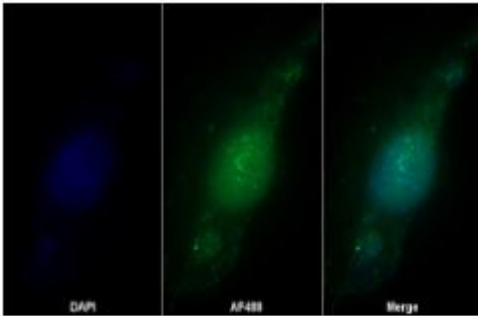
**Storage:** Avoid repeated freeze/thaw cycles.

Store at 4°C for frequent use.

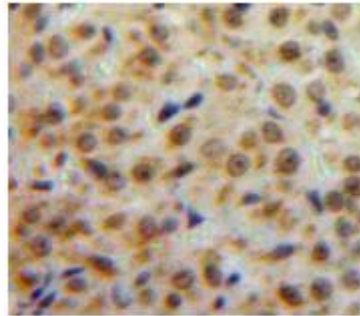
Aliquot and store at -20°C for 12 months.

**Stability Test:** The thermal stability is described by the loss rate. The loss rate was determined by accelerated thermal degradation test, that is, incubate the protein at 37°C for 48h, and no obvious degradation and precipitation were observed. The loss rate is less than 5% within the expiration date under appropriate storage condition.

**[ IDENTIFICATION ]**



AF488 staining on IF;  
Sample: U2OS cell



Used in DAB staining on formalin fixed  
paraffin-embedded Ovary tissue

**[ IMPORTANT NOTE ]**

The kit is designed for research use only, we will not be responsible for any issue if the kit was used in clinical diagnostic or any other procedures.