

Recombinant Human Thymidylate Synthetase (TYMS)

Catalog No.: TP04363

50µg

Sequence Information

Species: Human

Gene ID:7298

Swiss Prot:P04818

Synonyms:HST422, TMS, TS, d TMP synthase,
EC 2.1.1.45, MGC88736, Thymidylate
synthase, Thymidylate synthetase, Tsase,
TYMS, TYMS protein, Tyms
thymidylate synthetase

Residues:Gln36~Val313

QIQHILRCGVRKDDRTGTGTLVFGMQARYSLRDEFLLTTKRVFWKGVLEELL
WFIKGSTNAKELSSKGVKIWDANGSRDFLDSLGFSTREEDLGPVYGFQWRHFG
AEYRDMESDYSQGQVDQLQRVIDTIKTNPDDRRIMCAWNPRDLPLMALPPCHA
LCQFYVNSELSQCQLYQRSGDMGLGVPFNIASYALLTYMIAHITGLKPGDFIHT
LGDAAHIYLNHIEPLKIQLQREPRPFKLRILRKVEKIDDFKAEDFQIEGYNPH
TIKMEMAV

Product Information

Source: Recombinant expression.

Host: *E.coli*

Tags: N-terminal His Tag

Subcellular Location: Nucleus, Mitochondrion, Cytoplasm

Purity: >90%

Traits: Freeze-dried powder

Buffer formulation: PBS, pH7.4, containing 0.01% SKL, 1mM DTT, 5% Trehalose and Proclin300.

Original Concentration: 200µg/mL

Applications: Positive Control; Immunogen; SDS-PAGE; WB.

(May be suitable for use in other assays to be determined by the end user.)

Predicted isoelectric point: 6.8

Predicted Molecular Mass: 35.6kDa

Accurate Molecular Mass: 36kDa as determined by SDS-PAGE reducing conditions.

[USAGE]

Reconstitute in ddH₂O to a concentration of 0.1-0.5 mg/mL. Do not vortex.

[STORAGE AND STABILITY]

Storage: Avoid repeated freeze/thaw cycles.

Store at 2-8°C for one month.

Aliquot and store at -80°C for 12 months.

Stability Test: The thermal stability is described by the loss rate. The loss rate was determined by accelerated thermal degradation test, that is, incubate the protein at 37°C for 48h, and no obvious degradation and precipitation were observed. The loss rate is less than 5% within the expiration date under appropriate storage condition.

[IDENTIFICATION]

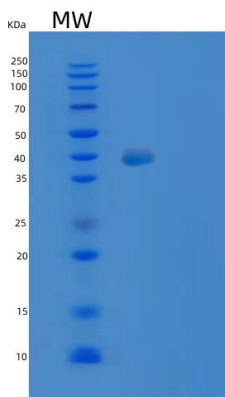


Figure 1. SDS-PAGE

[IMPORTANT NOTE]

The kit is designed for in vitro and research use only, we will not be responsible for any issue if the kit was used in clinical diagnostic or any other procedures.