



**Polyclonal Antibody to Protein Phosphatase 2A Activator, Regulatory  
Subunit 4 (PPP2R4)**

PA13099 100ul

**[ PROPERTIES ]**

**Source:** Polyclonal antibody preparation

**Host:** Rabbit

**Purification:** Antigen-specific affinity chromatography followed by Protein A affinity chromatography.

**Traits:** Liquid

Concentration: 200µg/mL

Ig Isotype:IgG

**UOM:** 100µl

**Cross Reactivity:** Human; Mouse, Rat

**Applications:**WB; IHC; ICC

**[ IMMUNOGEN ]**

Immunogen: Recombinant PPP2R4 with N-terminal His-Tag expressed in E.coli.

**[ APPLICATIONS ]**

**Western blotting:** 0.5-2µg/mL

**Immunohistochemistry:** 5-20µg/mL

**Immunocytochemistry:** 5-20µg/mL

Optimal working dilutions must be determined by end user.

**[ FORMULATION ]**

**Form & Buffer:** Supplied as solution form in 0.01M PBS, pH7.4, containing 0.05% Proclin-300, 50% glycerol.

**[ STORAGE AND STABILITY ]**



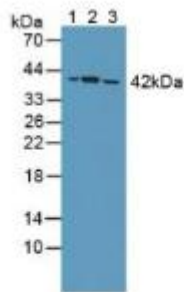
**Storage:** Avoid repeated freeze/thaw cycles.

Store at 4°C for frequent use.

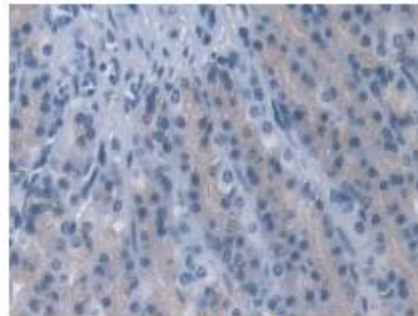
Aliquot and store at -20°C for 12 months.

**Stability Test:** The thermal stability is described by the loss rate. The loss rate was determined by accelerated thermal degradation test, that is, incubate the protein at 37°C for 48h, and no obvious degradation and precipitation were observed. The loss rate is less than 5% within the expiration date under appropriate storage condition.

### [ IDENTIFICATION ]



Western Blot; Samples: Lane1: Rat Serum;  
Lane2: Rat Testis lysate; Lane3: Rat



DAB staining on IHC-P;  
Samples: Rat Stomach Tissue;

Figure. Western Blot; Sample:  
Recombinant PPP2R4, Rat.

### [ IMPORTANT NOTE ]

The kit is designed for research use only, we will not be responsible for any issue if the kit was used in clinical diagnostic or any other procedures.