



## Polyclonal Antibody to Caveolin 1 (CAV1)

PA14002 100ul

### **[ PROPERTIES ]**

**Source:** Polyclonal antibody preparation

**Host:** Rabbit

**Purification:** Antigen-specific affinity chromatography followed by Protein A affinity chromatography.

**Traits:** Liquid

Concentration: 0.35mg/ml

Ig Isotype: IgG

**UOM:** 100µl

**Cross Reactivity:** Human, Mouse, Rat

**Applications:** WB; IHC; ICC; IP.

### **[ IMMUNOGEN ]**

Immunogen: Recombinant protein of human CAV1 (Met1~Ser104).

### **[ APPLICATIONS ]**

**Western blotting:** 0.5-2µg/mL;;

**Immunohistochemistry:** 5-20µg/mL;

**Immunocytochemistry:** 5-20µg/mL;

Optimal working dilutions must be determined by end user.

### **[ FORMULATION ]**

**Form & Buffer:** Supplied as solution form in 0.01M PBS, pH7.4, containing 0.05% Proclin-300, 50% glycerol.

### **[ STORAGE AND STABILITY ]**

**Storage:** Avoid repeated freeze/thaw cycles.



Store at 4°C for frequent use.

Aliquot and store at -20°C for 12 months.

**Stability Test:** The thermal stability is described by the loss rate. The loss rate was determined by accelerated thermal degradation test, that is, incubate the protein at 37°C for 48h, and no obvious degradation and precipitation were observed. The loss rate is less than 5% within the expiration date under appropriate storage condition.

### [ IDENTIFICATION ]

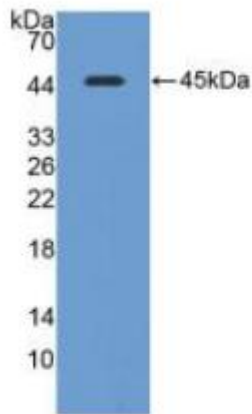
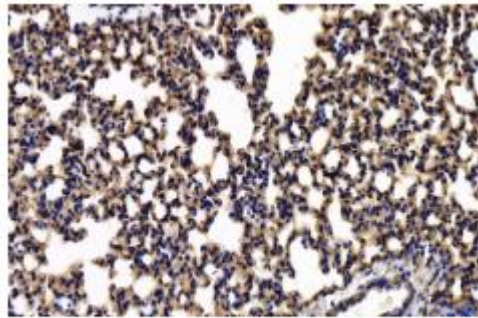


Figure. Western Blot; Sample:  
Recombinant CAV1, Mouse.



DAB staining on IHC-P;  
Sample: Mouse Lung Tissue;

### [ IMPORTANT NOTE ]

The kit is designed for research use only, we will not be responsible for any issue if the kit was used in clinical diagnostic or any other procedures.