



## Polyclonal Antibody to Prostate-specific Membrane Antigen (PMSA)

PA14005 100ul

### **[ PROPERTIES ]**

**Source:** Polyclonal antibody preparation

**Host:** Rabbit

**Purification:** Antigen-specific affinity chromatography followed by Protein A affinity chromatography.

**Traits:** Liquid

Concentration: 0.5mg/ml

Ig Isotype: IgG

**UOM:** 100µl

**Cross Reactivity:** Mouse;Rat

**Applications:** WB,IHC.

### **[ IMMUNOGEN ]**

Immunogen: Recombinant protein of human PMSA (Ala274~Leu587).

### **[ APPLICATIONS ]**

**Western blotting:** : 0.01-2µg/mL;

**Immunohistochemistry:** 5-20µg/mL;

Optimal working dilutions must be determined by end user.

### **[ FORMULATION ]**

**Form & Buffer:** Supplied as solution form in 0.01M PBS, pH7.4, containing 0.05% Proclin-300, 50% glycerol.

### **[ STORAGE AND STABILITY ]**

**Storage:** Avoid repeated freeze/thaw cycles.

Store at 4°C for frequent use.

Aliquot and store at -20°C for 12 months.

**Stability Test:** The thermal stability is described by the loss rate. The loss rate was determined by accelerated thermal degradation test, that is, incubate the protein at 37°C for 48h, and no obvious degradation and precipitation were observed. The loss rate is less than 5% within the expiration date under appropriate storage condition.

**[ IDENTIFICATION ]**

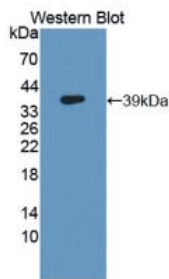
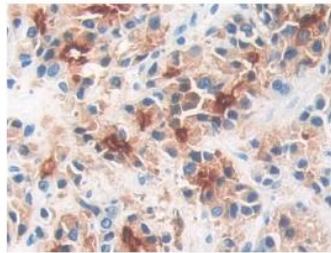
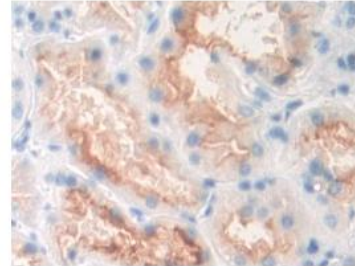


Figure. Western Blot; Sample: Recombinant GCPII, Human.



DAB staining on IHC-P;  
Samples: Human Prostate cancer Tissue;  
Primary Ab: 10µg/ml Rabbit Anti-Human GCPII Antibody  
Second Ab: 2µg/mL HRP-Linked Caprine Anti-Rabbit IgG Polyclonal Antibody



DAB staining on IHC-P;  
Samples: Human Kidney Tissue;  
Primary Ab: 10µg/ml Rabbit Anti-Human GCPII Antibody  
Second Ab: 2µg/mL HRP-Linked Caprine Anti-Rabbit IgG Polyclonal Antibody

**[ IMPORTANT NOTE ]**

The kit is designed for research use only, we will not be responsible for any issue if the kit was used in clinical diagnostic or any other procedures.