



# Recombinant Human Microphthalmia Associated Transcription Factor (MITF)

Catalog No.: TP10448

100µg

## Sequence Information

**Species:** Human

**Gene ID:**4286

**Swiss Prot:**O75030

**Synonyms:**WS2A; MI; bHLHe32; Homolog Of  
Mouse Microphthalmia; Class E basic  
helix-loop-helix protein 32

**Residues:**Met1-Cys520

MQSESGIVPDFEVGEEFHEEPKTTYELKSQPLKSSSSAEHPGASKPPISSSSMT  
SRILLRQQLMREQMQEQERREQQKLQAAQFMQQRVPVSQTPAINVSVPTTLPS  
ATQVPMEVLKVQTHLENPTKYHIQQAQRQVKQYLSTTLANKHANQVLSLPCPN  
QPGDHVMPPVPGSSAPNSPMAMLTLSNCEKEGFYKFEEQNRAESECPMNTHS  
RASCQMDDVIDDIISLESSYNEEILGLMDPALQMANTLPVSGNLIDLYGNQGL  
PPPGLTISNSCPANLPNIKRELTACIFPTESEARALAKERQKKDNHNLIERRRR  
FNINDRIKELGTLIPKSNPDPMRWNGTILKASVDYIRKLQREQQRAKELENRQ  
KKLEHANRHLLLRIQELEMQARAHGLSLIPSTGLCSPDLVNRIIKQEPVLENC  
QDLLQHHADLTCTTTDLTDGTITFNNLGTGTEANQAYSVP TKMGSKLEDILM  
DDTLSPVGVTDP LLSSVSPGASKTSSRRSSMSME

## Product Information

**Source:** Recombinant expression.

**Host:** *E.coli*

**Tags:** N-terminal His-Tag

**Subcellular Location:** Nucleus.

**Purity:** >90%

**Traits:** Freeze-dried powder

**Buffer formulation:** PBS, pH7.4, containing 0.01% SKL, 1mM DTT, 5% Trehalose and Proclin300.

**Original Concentration:** 200µg/mL

**Applications:** Positive Control; Immunogen; SDS-PAGE; WB.

(May be suitable for use in other assays to be determined by the end user.)

**Predicted isoelectric point:** 5.9

**Predicted Molecular Mass:** 61.9kDa

**Accurate Molecular Mass:** 62kDa as determined by SDS-PAGE reducing conditions.

## **[ USAGE ]**

Reconstitute in ddH<sub>2</sub>O to a concentration of 0.1-0.5 mg/mL. Do not vortex.

## **[ STORAGE AND STABILITY ]**

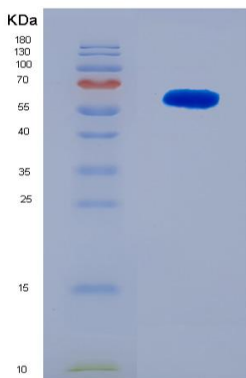
**Storage:** Avoid repeated freeze/thaw cycles.

Store at 2-8°C for one month.

Aliquot and store at -80°C for 12 months.

**Stability Test:** The thermal stability is described by the loss rate. The loss rate was determined by accelerated thermal degradation test, that is, incubate the protein at 37°C for 48h, and no obvious degradation and precipitation were observed. The loss rate is less than 5% within the expiration date under appropriate storage condition.

## **[ IDENTIFICATION ]**



**Figure 1. SDS-PAGE**

## **[ IMPORTANT NOTE ]**

The kit is designed for in vitro and research use only, we will not be responsible for any issue if the kit was used in clinical diagnostic or any other procedures.