



## Recombinant Rabbit Monoclonal Antibody to S100A4

RMA01184 50ul

### **[ PROPERTIES ]**

**Source:** Monoclonal antibody preparation

**Host:** Rabbit

**Purification:** Protein A affinity chromatography.

**Traits:** Liquid

Concentration: 1mg/ml

Clone Number:C

Ig Isotype:IgG

**UOM:** 100µl

**Cross Reactivity:** Human

**Applications:** WB,IHC,ICC/IF,FC,IP.

### **[ IMMUNOGEN ]**

Immunogen: A synthetic peptide of human S100A4

### **[ APPLICATIONS ]**

**WB:** 1:1000

**IHC-P:** 1:200-1:2000

**ICC/IF:** 1:100-1:200

**FC:** 1:100-1:200

**IP:** 1:20-1:50

Optimal working dilutions must be determined by end user.

### **[ FORMULATION ]**

**Form & Buffer:** Supplied as solution form in 0.01M PBS, pH7.4, containing 0.05% Proclin-300, 50% glycerol.

### **[ STORAGE AND STABILITY ]**

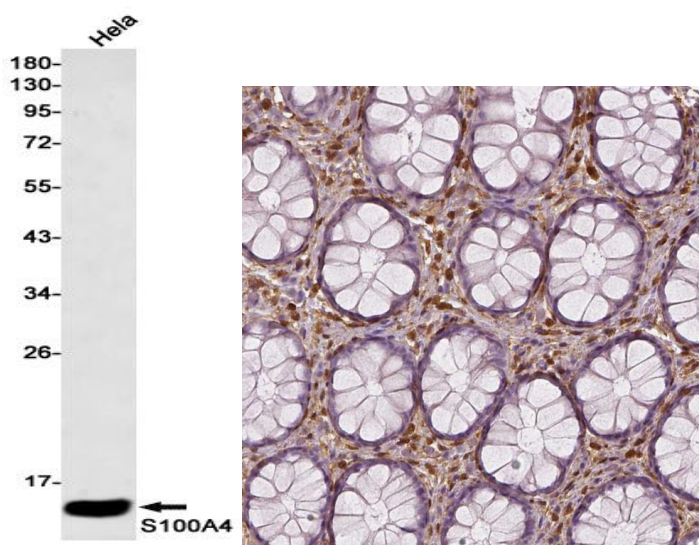
**Storage:** Avoid repeated freeze/thaw cycles.

Store at 4°C for frequent use.

Aliquot and store at -20°C for 12 months.

**Stability Test:** The thermal stability is described by the loss rate. The loss rate was determined by accelerated thermal degradation test, that is, incubate the protein at 37°C for 48h, and no obvious degradation and precipitation were observed. The loss rate is less than 5% within the expiration date under appropriate storage condition.

#### [ IDENTIFICATION ]



#### [ IMPORTANT NOTE ]

The kit is designed for research use only, we will not be responsible for any issue if the kit was used in clinical diagnostic or any other procedures.