



Recombinant Thymidine Kinase 1, Soluble (TK1)

Catalog No.: TP11850 200ug

Sequence Information

Species: Human

Gene ID:7083

Swiss Prot:P04183

Synonyms : Thymidine kinase, cytosolic

Residues:Ser2-Asn234

SCINLPTVL PGSPSKTRGQ IQVILGPMFS GKSTELMRRV RRFQIAQYKC
LVIKYAKDTR YSSSFCTHDR NTMEALPACL LRDVAQEALG VAVIGIDEGQ
FFPDIVEFCE AMANAGKTVI VAALDGTFFQR KPFGAILNLV PLAESVVKLT
AVCMECFREA AYTKRLGTEK EVEVIGGADK YHSVCRLCYF KKASGQPAGP
DNKENCVPG KPGEAVAARK LFAPQQILQC SPAN

Product Information

Source: Prokaryotic expression.

Host: *E. coli*

Tags: N-terminal His and GST Tag

Subcellular Location: Secreted.

Purity: >90%

Traits: Freeze-dried powder

Buffer formulation: 20mM Tris, 150mM NaCl, pH8.0, containing 0.01% SKL, 5% Trehalose.

Original Concentration: 200µg/mL

Applications: Positive Control; Immunogen; SDS-PAGE; WB.

(May be suitable for use in other assays to be determined by the end user.)

Predicted isoelectric point:8.9

Predicted Molecular Mass: 55.3kDa

Accurate Molecular Mass: 55kDa as determined by SDS-PAGE reducing conditions.

Phenomenon explanation:

The possible reasons that the actual band size differs from the predicted are as follows:

1. Splice variants: Alternative splicing may create different sized proteins from the same gene.
2. Relative charge: The composition of amino acids may affects the charge of the protein.
3. Post-translational modification: Phosphorylation, glycosylation, methylation etc.
4. Post-translation cleavage: Many proteins are synthesized as pro-proteins, and then cleaved to give the active form.
5. Polymerization of the target protein: Dimerization, multimerization etc.

[USAGE]

Reconstitute in 20mM Tris, 150mM NaCl (pH8.0) to a concentration of 0.1-0.5mg/mL. Do not vortex.

[STORAGE AND STABILITY]

Storage: Avoid repeated freeze/thaw cycles.

Store at 2-8°C for one month.

Aliquot and store at -80°C for 12 months.

Stability Test: The thermal stability is described by the loss rate. The loss rate was determined by accelerated thermal degradation test, that is, incubate the protein at 37°C for 48h, and no obvious degradation and precipitation were observed. The loss rate is less than 5% within the expiration date under appropriate storage condition.

[IDENTIFICATION]

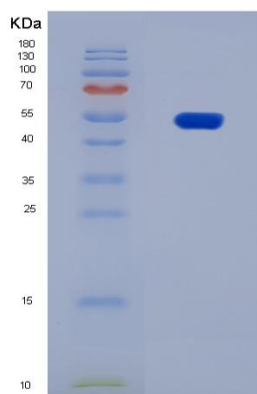


Figure 1. SDS-PAGE

[IMPORTANT NOTE]

The kit is designed for in vitro and research use only, we will not be responsible for any issue if the kit was used in clinical diagnostic or any other procedures.