

Recombinant Human DCBLD2/ESDN Protein

Catalog No.: TP10956

100µg

Sequence Information

Species: Human

Gene ID:131566

Swiss Prot:Q96PD2

Synonyms: Discoidin; CUB and LCCL

domain-containing protein

2;DCBLD2;CUB; LCCL and

coagulation factor V/VIII-homology

domains protein 1;Endothelial and

smooth muscle cell-derived

neuropilin-like protein;DCBLD2;CLCP1;

ESDN;

Residues:Gln67-Ala528

QQGDGCGHTVLGPESGLTTSINYPQTYPNSTVCEWEIRVKMGERVRIKFGDFDI
EDSDSCHFNLYLRIYNGIGVSRTEIGKYCGLGLQMNHSIESKGNEITLLFMSGIH
VSGRGFLASYSVIDKQDLITCLDTASNFLPEFSKYCPAGCLLPFAEISGTIPH
GYRDSPLCMAGVHAGVVSNTLGGQISVWISKGIPYYESSLANNVTSVVGHLST
SLFTFKTSGCYGTLGMESGVIADPQITASSVLEWTDHTGQENSWKPKKARLKKP
GPPWAAFATDEYQLQIDLNKEKKITGIITTGSTMVEHNYYVSAYRILYSDDGQ
KWTVYREPGVEQDKIFQGNKDYHQDVRNNFLPPIIARFIRVNPTQWQQKIAMKM
ELLGCQFIPKGRPPKLTQPPPPRNSNDLKNTTAPPKIAKGRAPKFTQPLQPRSS
NEFPAQTEQTTASPDIRNTTTPNVTKDVA

Product Information

Source: Recombinant expression.

Host: *E.coli*

Tags: N-terminal His Tag

Subcellular Location: Membrane.

Purity: >90%

Traits: Freeze-dried powder

Buffer formulation: PBS, pH7.4, containing 0.01% SKL, 1mM DTT, 5% Trehalose and Proclin300.

Original Concentration: 200µg/mL

Applications: Positive Control; Immunogen; SDS-PAGE; WB.

(May be suitable for use in other assays to be determined by the end user.)

Predicted isoelectric point: 7.9

Predicted Molecular Mass: 54.6kDa

Accurate Molecular Mass: 55kDa as determined by SDS-PAGE reducing conditions.

[USAGE]

Reconstitute in ddH₂O to a concentration of 0.1-0.5 mg/mL. Do not vortex.

[STORAGE AND STABILITY]

Storage: Avoid repeated freeze/thaw cycles.

Store at 2-8°C for one month.

Aliquot and store at -80°C for 12 months.

Stability Test: The thermal stability is described by the loss rate. The loss rate was determined by accelerated thermal degradation test, that is, incubate the protein at 37°C for 48h, and no obvious degradation and precipitation were observed. The loss rate is less than 5% within the expiration date under appropriate storage condition.

[IDENTIFICATION]

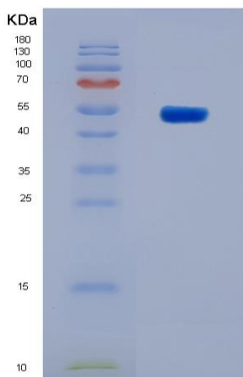


Figure 1. SDS-PAGE

[IMPORTANT NOTE]

The kit is designed for in vitro and research use only, we will not be responsible for any issue if the kit was used in clinical diagnostic or any other procedures.