

## Recombinant Zinc finger protein GLI1 (Gli1)

Catalog No.: TP11933

100µg

### Sequence Information

**Species:** Mouse

**Gene ID:**14632

**Swiss Prot:**P47806

**Synonyms:**GLI1

**Residues:**Met1-Ala1111

MFNPMTTPQVNSYSEPCCLRLHSQGVPSMGTEGLSGLPFCHQANFMSGSQGYG  
AARETSSCTEGLSFPPPPPPRSSVKLTKKRAL SISPLSDASLDLQTVIRTSPSS  
LVAFINSRCTSPGGSYGHL SIGTMSPSLGFPPQMSHQGTSPPYGVQPCVPHDS  
TRGSMMLHPQSRGPRATCQLKSELDMVKGKPEDPLEGDMSSPNSTGTQDHLLG  
MLDGREDLEREEKPEPEVSVEYETDCRWDGCSQEFDSQEQLVHHINSEIHGERKE  
FVCHWGGCSRELRFKAQYMLVVHMRRHTGEKPHKCTFEGCRKSYSRLENLKTH  
LRSHTGEKPYMCEQEGCSKAFSNASDRAKHQNRTHSNEKPYVCKLPGCTKRYTD  
PSSLRKHVKTVHGPDAHVTKRHRGDGPLPRAQPLSTVEPKREREGGSGREESRL  
TVPE SAMPQQSPGAQSSCSSDHS PAGSAANTDSGVEMAGNAGGSTEDLSSLDEG  
PCVSATGLSTLRRLENLRDQLHQLRPIGSRGLKLP SLTHAGAPVSRRLGPPVS  
LDRRSSSSSSMSAYTVSRRSSLASPFPPGTPPENGLPLGTPAQHYMLRAR  
YASARGSGTPPTAAHSLDRMGGLSVPPWRSRTEYPGYNP NAGVTRRASDPARAA  
DHPAPARVQRFKSLGCVHTPPSVATGRNFDPHHPTSVYSPQPPSITENVAMDTR  
GLQEPEVGTSMGNGLNPYMDFSSTDTLGYGGPEGTA AEPEYARGPGSLPLGP  
GPPTNYGPGHCAQQVSYDPDPTENWGEFPSHAGVYPSNKAPGAAYSQCPRLEHY  
GQVQVKPEQGCVPVSDSTGLAPCLNAHPSEGSPGPQLF SHHPQLPQPYPQSG  
PYPQPPHGYLSTEPRLGLNFPSSSHSTGQLKAQLVCNYVQSQQELLWEGRNRG  
GLPNQELPYQSPKF LGGSQVSQSPAKTAAAAAAYGSGFAPASANHKS GSYAP  
SPCHETFTVGVNRP SHRPAAPPRLLPPLSPCYGPLKVGDTNPSCGHPEVGR LGA  
GPALYPPPEGQVCNALDSL DLDNTQLDFVAI LDEAQGLSPPLSHEQG DSSKNTP  
SPSGPPNMAVGNMSVLLGSLPGETQFLNSSA

### Product Information

**Source:** Recombinant expression.

**Host:** *E.coli*

**Tags:** N-GST+C-his

**Subcellular Location:** Nucleus, Cytoplasm.

**Purity:** >90%

**Traits:** Freeze-dried powder

**Buffer formulation:** PBS, pH7.4, containing 0.01% SKL, 1mM DTT, 5% Trehalose and Proclin300.

**Original Concentration:** 200µg/mL

**Applications:** Positive Control; Immunogen; SDS-PAGE; WB.

(May be suitable for use in other assays to be determined by the end user.)

**Predicted isoelectric point:** 7.4

**Predicted Molecular Mass:** 148.6kDa

**Accurate Molecular Mass:** 149kDa as determined by SDS-PAGE reducing conditions.

## [ USAGE ]

Reconstitute in ddH<sub>2</sub>O to a concentration of 0.1-0.5 mg/mL. Do not vortex.

## [ STORAGE AND STABILITY ]

**Storage:** Avoid repeated freeze/thaw cycles.

Store at 2-8°C for one month.

Aliquot and store at -80°C for 12 months.

**Stability Test:** The thermal stability is described by the loss rate. The loss rate was determined by accelerated thermal degradation test, that is, incubate the protein at 37°C for 48h, and no obvious degradation and precipitation were observed. The loss rate is less than 5% within the expiration date under appropriate storage condition.

## [ IDENTIFICATION ]

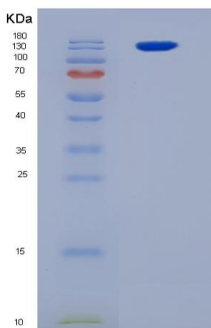


Figure 1. SDS-PAGE

## [ IMPORTANT NOTE ]

The kit is designed for in vitro and research use only, we will not be responsible for any issue if the kit was used in clinical diagnostic or any other procedures.

